



## Users Guide & Installation Handbook

# WM14vi

Please read carefully and retain for future reference

**bellling**<sup>®</sup>  
think of everything

[www.belling.co.uk](http://www.belling.co.uk)

## INTRODUCTION

Thank you for buying this high quality appliance from us. We would like to congratulate you on choosing this appliance, and hope you find it to be an attractive and beneficial addition to your home.

This handbook is designed to help you through each step of owning your new appliance, from installation, to use.

Please read through all of this guide carefully before you start using your appliance, as we have endeavoured to answer as many questions as possible, and provide you with as much support as we can.

If, however, you should find something missing, or not covered, please contact the Belling Customer Care team who will be only too happy to assist you on:

**0871 22 22 503**

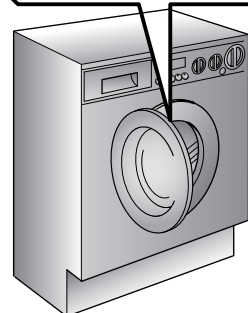
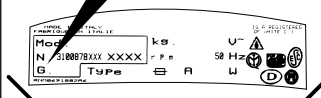
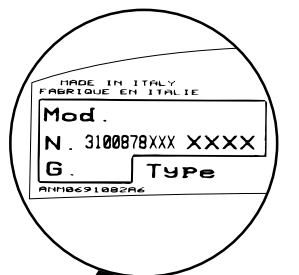
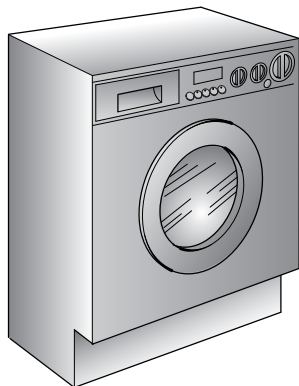
In addition you could always try the website for frequently asked questions and more Customer Care information.

Our policy is one of constant development and improvement, therefore we cannot guarantee the strict accuracy of all of our illustrations and specifications - changes may have been made subsequent to publishing.

## CUSTOMER CARE INFORMATION

If you should experience problems while operating the appliance please refer to Chapter 13 – Faults search. If the answer to the problem is not covered please call the Customer Care Centre number listed above.

Your appliance is covered by a 12 month manufacturers guarantee. If you experience problems within the first year from the date of purchase a service engineer will be sent to resolve the problem without charge. In order to prove the age of the product please retain your purchase receipt.



## INDEX

Introduction

General points on delivery

Guarantee

Safety Measures

Technical Data

Setting up and Installation

Control Description

Table of Programmes

Selection

Detergent drawer

The Product

Washing

Cleaning and routine maintenance

Faults Search

## CHAPTER

1

2

3

4

5

6

7

8

9

10

11

12

13

## CHAPTER 1

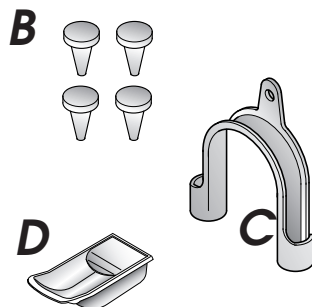
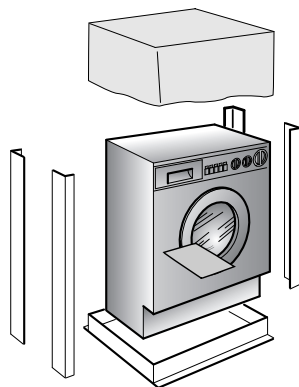
### GENERAL POINTS ON DELIVERY

On delivery, check that the following are included with the machine:

- A) INSTRUCTION MANUAL
- B) PLUGS
- C) BEND FOR OUTLET TUBE
- D) LIQUID DETERGENT OR LIQUID BLEACH COMPARTMENT (CONTAINER)

### **KEEP THEM IN A SAFE PLACE**

Check that the machine has not incurred damage during transport. If this is the case, contact your nearest Technical Assistance Centre.



## CHAPTER 2

### GUARANTEE

The appliance is supplied with a manufacturer's 12 month guarantee. Please retain your purchase receipt. This should be kept in a safe place and presented to the engineer if a service call is required.

## CHAPTER 3

### SAFETY MEASURES

#### IMPORTANT: FOR ALL CLEANING AND MAINTENANCE WORK

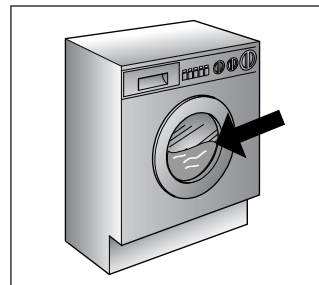
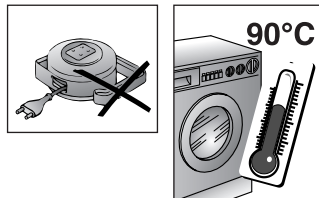
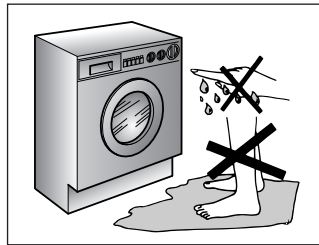
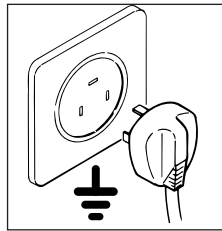
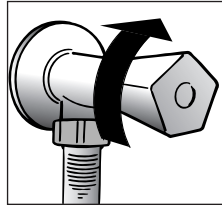
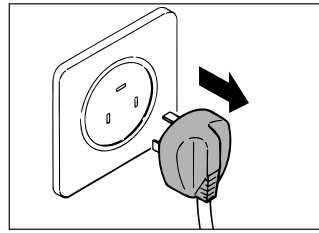
- Remove the plug
- Turn off the water inlet tap.
- All Belling appliances are earthed. Ensure that the main electricity circuit is earthed. Contact a qualified electrician if this is not the case.

**CE** Appliance complies with European Directives 73/23/EEC and 89/336/EEC, replaced by 2006/95/EC and 2004/108/EC, and subsequent amendments.

- Do not touch the appliance with wet or damp hands or feet.

#### WARNING: DURING THE WASHING CYCLE, THE WATER CAN REACH A TEMPERATURE OF 90°C.

- Before opening the washing machine door, ensure that there is no water in the drum.



- Do not use extension leads or multiple plugs.

● This appliance is not intended for use by persons (including children) with reduced physical, sensory or mental capabilities, or lack of experience and knowledge, unless they have been given supervision or instruction concerning use of the appliance by a person responsible for their safety.

Children should be supervised to ensure that they do not play with the appliance.

- Do not pull the mains lead or the appliance itself to remove the plug from the socket.

- Do not leave the appliance exposed to atmospheric conditions (rain, sun etc.)

- In the case of removal, never lift the appliance by the knobs or detergent drawer.

- During transportation do not lean the door against the trolley.

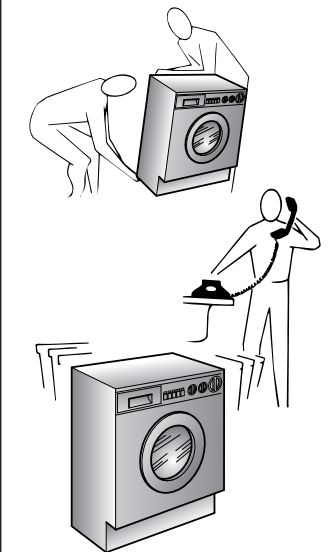
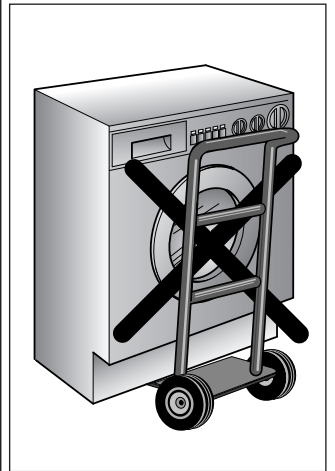
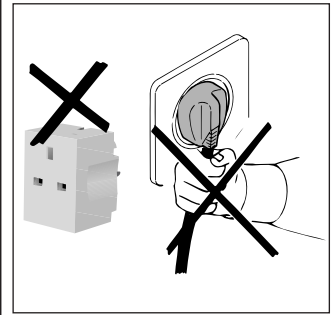
#### Important!

When the appliance location is on carpet floors, attention must be paid so as to ensure that there is no obstruction to the bottom vents.

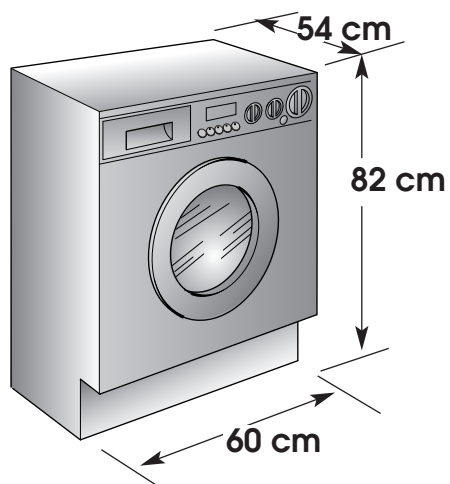
- Lift the appliance in pairs as illustrated in the diagram.

● In the case of failure and/or incorrect operation, turn the washing machine off, close the water inlet tap and do not tamper with the appliance. Contact a Technical Assistance Centre for any repairs and ask for original spare parts. Avoidance of these norms may compromise the safety of the appliance.

- Should the supply cord (mains cable) be damaged, this is to be replaced by a specific cable available from the after sales service centre.



## CHAPTER 4



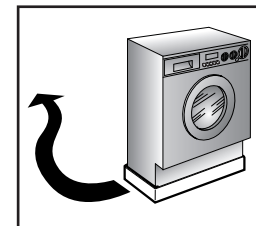
### TECHNICAL DATA

MAXIMUM WASH LOAD DRY	<i>kg</i>	<b>6</b>
POWER INPUT	<i>W</i>	<b>2150</b>
ENERGY CONSUMPTION (PROG. 90°C)	<i>kWh</i>	<b>1,8</b>
FUSE RATING	<i>A</i>	<b>13</b>
SPIN	<i>r.p.m.</i>	<b>1400</b>
WATER PRESSURE	<i>MPa</i>	<b>min. 0,05 max. 0,8</b>
SUPPLY VOLTAGE	<i>V</i>	<b>230</b>

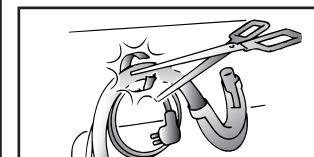
## CHAPTER 5

### SETTING UP INSTALLATION

Move the machine near its permanent position without the packaging base.

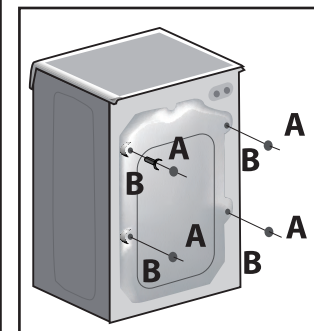


Cut tube-holding straps.

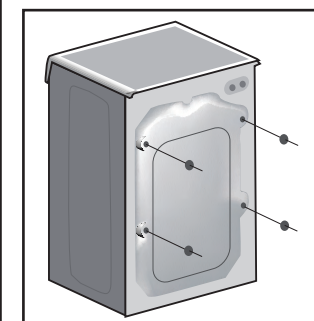


Remove the 4 fixing screws marked (A) and remove the 4 spacers marked (B)

For some models 1 or more spacers will fall inside the machine; By tilting the machine, remove the mentioned spacers.



Stop the holes using the plugs that you will find inside the bag containing the instruction booklet.

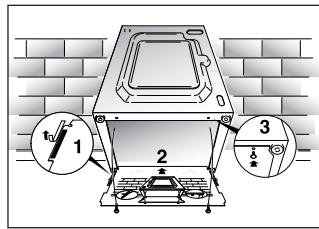


**WARNING:**  
DO NOT LEAVE THE PACKAGING IN THE REACH OF CHILDREN AS IT IS A POTENTIAL SOURCE OF DANGER.

Fix the sheet of corrugated material on the bottom as shown in picture.

Connect the fill hose to the tap.

The appliance must be connected to the water mains using new hose-sets. The old hose-sets should not be reused.

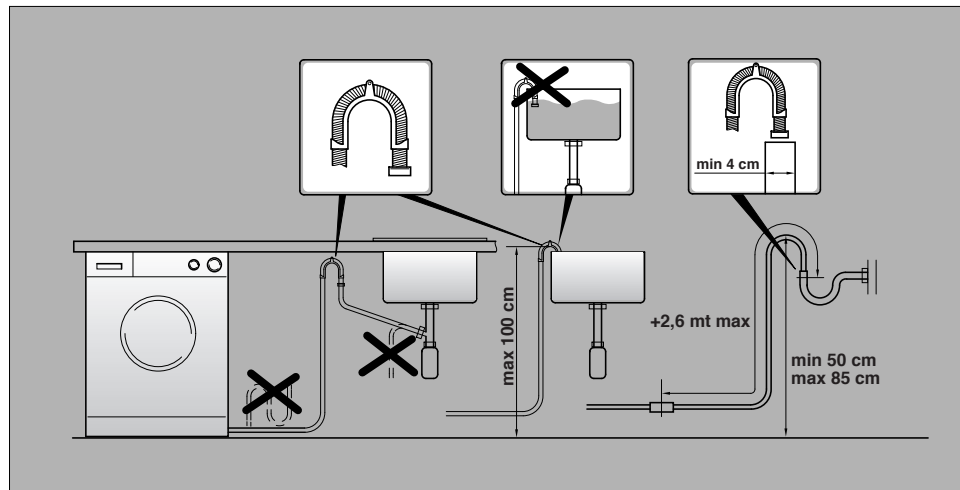
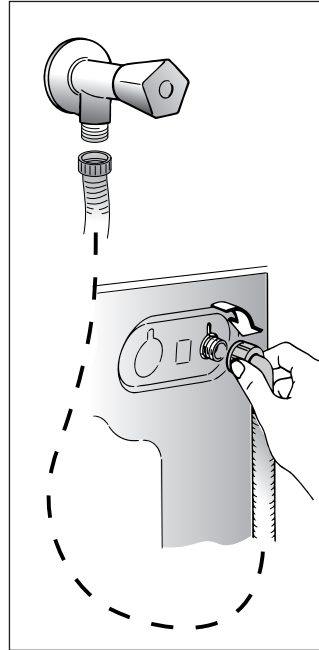


**IMPORTANT:  
DO NOT TURN THE TAP ON AT THIS TIME.**

Position the washing machine next to the wall. Hook the outlet tube to the edge of the sink paying attention that there are no bends or restrictions along the tube.

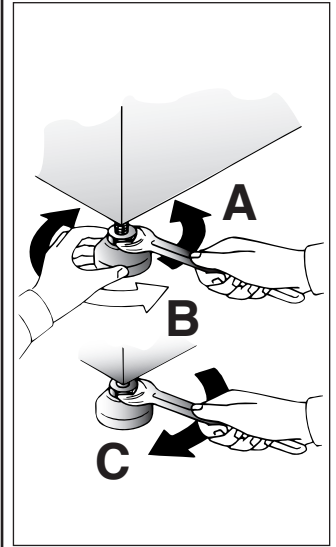
It is better to connect the discharge hose to a fixed outlet of a diameter greater than that of the outlet tube and at a height of min. 50 cm. If is necessary to use the plastic sleeve supplied.

Please refer to diagrams below for various installation options.



Use the 4 feet to level the machine with the floor.

- Turn the nut clockwise to release the screw adjuster of the foot.
- Rotate foot to raise or lower it until it stands firmly on the ground.
- Lock the foot in position by turning the nut anti-clockwise until it comes up against the bottom of the machine.



Ensure that the knob is on the "OFF" position and the load door is closed

Insert the plug.

After installation, the appliance must be positioned so that the plug is accessible.

## REMOVING THE PLUG:

If your appliance has a non-rewireable moulded plug and you should wish to re-route the mains cable through partitions, units etc., please ensure that either:  
the plug is replaced by a fused 13 ampere re-wireable plug bearing the BSI mark of approval.  
or:  
the mains cable is wired directly into a 13 amp cable outlet, controlled by a switch, (in compliance with BS 5733) which is accessible without moving the appliance.

## DISPOSING OF THE PLUG:

Ensure that before disposing of the plug itself, you make the pins unusable so that it cannot be accidentally inserted into a socket.

## INSTRUCTIONS FOR CONNECTING CABLE TO AN ALTERNATIVE PLUG:

**Important:** the wires in the mains lead are coloured in accordance with the following code:

Green & Yellow	Earth
Blue	Neutral
Brown	Live

As the colours of the wires in the lead may not correspond with the coloured markings identifying the terminals in your plug, proceed as follows:

Connect Green & Yellow wire to terminal marked **E** or  or coloured Green or Green & Yellow. Connect Brown wire to terminal marked **L** or coloured Red.

Connect Blue wire to terminal marked **N** or coloured Black.

If a 13 amp plug (BS 1363) is used it must be fitted with a 13 amp fuse either in the plug or adaptor or at the distribution board. If you are in any doubt the electrical supply to your machine, consult a qualified electrician before use.

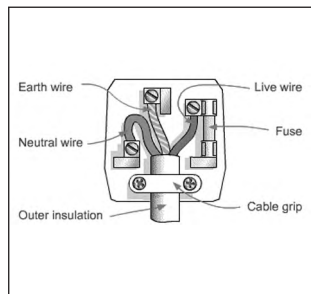
## HOW TO CONNECT AN ALTERNATIVE PLUG:

The wires in this mains lead are coloured in accordance with the following code:

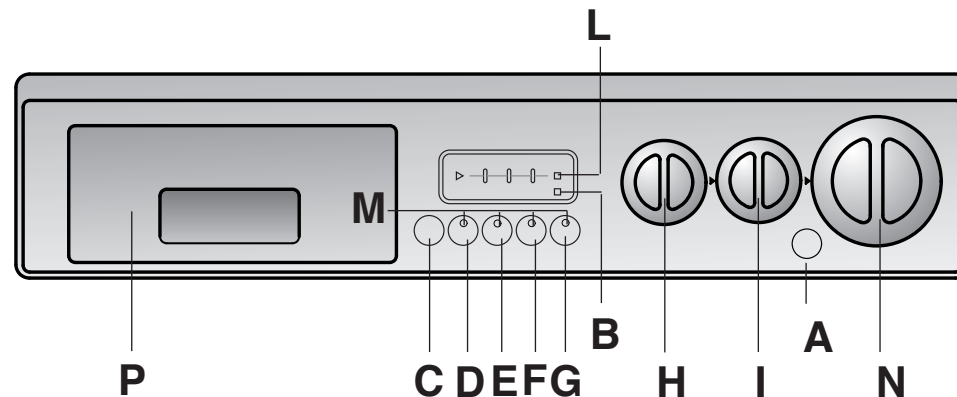
BLUE	NEUTRAL(N)
BROWN	LIVE(L)
GREEN&YELLOW	EARTH(E)

## DISPOSING OF THE APPLIANCE:

When disposing of the appliance please remove the plug by cutting the mains cable as close as possible to the plug body and dispose of it as described above.



## CHAPTER 6



### CONTROLS

Door open button

Door locked indicator light

Start button

Delay Start button

Intensive button

Extra Rinse button

Crease Guard button

spin speed control

Wash Temperature Control Knob

Time countdown system and Delay Start indicator lights

Buttons indicator light

Timer knob for wash programmes with OFF position

Detergent drawer

A

B

C

D

E

F

G

H

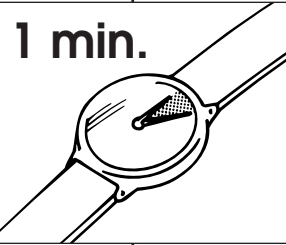



I




L

M

N

P

DESCRIPTION OF CONTROL		
<p><b>DOOR OPEN BUTTON</b></p> <div data-bbox="91 229 736 379" style="border: 1px solid black; padding: 5px;"> <p><b>IMPORTANT:</b> A SPECIAL SAFETY DEVICE PREVENTS THE DOOR FROM OPENING AT THE END OF THE WASH/SPIN CYCLE. AT THE END OF THE SPIN PHASE WAIT UP TO 1 MINUTE BEFORE OPENING THE DOOR.</p> </div>	<p><b>A</b></p> <div data-bbox="779 240 1070 485" style="border: 1px solid black; padding: 5px;"> <p>1 min.</p>  </div>	
<p><b>DOOR LOCKED INDICATOR</b> The "Door Locked" indicator light is illuminated when the door is fully closed and the machine is ON. When START is pressed on the machine with the door closed the indicator will flash momentarily and then illuminate. <b>If the door is not closed the indicator will continue to flash.</b> A special safety device prevents the door from being opened immediately after the end of the cycle. Wait for 1 minute after the wash cycle has finished and the Door Locked light has gone out before opening the door. At the end of cycle turn the programme selector to OFF.</p>	<p><b>B</b></p>	
<p><b>START BUTTON</b> When a programme is selected, wait for the "STOP" indicator light to flash before pressing the START button.</p> <p>Press to start the selected cycle (according to the selected cycle one indicator lights will go on) .</p> <div data-bbox="91 1010 736 1110" style="border: 1px solid black; padding: 5px;"> <p><b>NOTE: WHEN THE START BUTTON HAS BEEN PRESSED THE APPLIANCE CAN TAKE A FEW SECONDS BEFORE IT STARTS WORKING.</b></p> </div> <p><b>CHANGING THE SETTINGS AFTER THE PROGRAMMES HAS STARTED (PAUSE)</b> The programme may be paused at any time during the wash cycle by holding down the "Start/Pause" button for about two seconds. When the machine is in the paused mode, the indicator light "Time countdown" and option buttons will flash. To restart the programme, press the START button once again.</p> <p>If you wish to add or remove items during washing, wait 1 minute until the safety device unlocks the door. When you have carried out the manoeuvre, close the door, press START button and the appliance will continue working from where it left off.</p> <p><b>CANCELLING THE PROGRAMME</b> To cancel the programme, set the selector to the OFF position. Select a different programme. Re-set the programme selector to the OFF position.</p>	<p><b>C</b></p>	

<p>The option buttons should be selected before pressing the START button</p>		
<p><b>DELAY START BUTTON</b></p> <p>Appliance start time can be set with this button, delaying the start by 3, 6 or 9 hours. Proceed as follows to set a delayed start: Select a programme ("STOP" indicator light blinks) Press "Delay Start" button (each time the button is pressed the start will be delayed by 3, 6 or 9 hours respectively and the corresponding light will blink). Press "Start/Pause" to commence the Delay Start operation (the indicator light associated with the selected Delay Start time stops blinking and remains ON). At the end of the required time delay the programme will start.</p> <p><b>To cancel the Delay Start function :</b> press the "Delay Start" button until the indicator lights will be off (The "STOP" light blinks) and the programme can be started manually using the "Start/Pause" button or switch off the appliance by turning the programme selector to "OFF" position.</p> <div data-bbox="1196 639 1834 790" style="border: 1px solid black; padding: 5px;"> <p><b>WARNING: IF THERE IS ANY BREAK IN THE POWER SUPPLY WHILE THE MACHINE IS OPERATING, A SPECIAL MEMORY STORES THE SELECTED PROGRAMME AND, WHEN THE POWER IS RESTORED, IT CONTINUES WHERE IT LEFT OFF.</b></p> </div>	<p><b>D</b></p>	
<p><b>INTENSIVE BUTTON</b></p> <p>By pressing this button, which can only be activated in the <b>Cotton</b> cycles, the sensors in the new system come into operation. They affect both the selected temperature, keeping it at a constant level throughout the wash cycle, and the mechanical function of the drum. The drum is made to turn at two different speeds at crucial moments. When the detergent enters the garments, the drum rotates in such a way that the detergent is distributed in a uniform manner; during the wash and rinse procedures, however, the speed increases in order to maximise the cleaning action. Thanks to this special system, the efficiency of the wash procedure is improved WITHOUT ANY INCREASE IN THE LENGTH OF THE PROGRAM.</p>	<p><b>E</b></p>	
<p><b>EXTRA RINSE BUTTON</b></p> <p>The extra rinse program ensures clothing is thoroughly rinsed and free of detergents. The program combines a unique drum action with a number of additional rinses to achieve a high degree of detergent free clothing.</p> <p>The extra rinse program is ideal for people with sensitive skin who require minimum detergent residue to avoid irritation or allergies. It is advisable to use this program to clean children's clothing, towels and heavily soiled items where a lot of detergent has been used and is retained in the fibres.</p> <p>Note: - This program is not suitable for woollen garments and is not available during the wool program.</p>	<p><b>F</b></p>	



### CREASE GUARD BUTTON

The Crease Guard function minimizes creases as much as possible with a uniquely designed anti-crease system that is tailored to specific fabrics.

**MIXED FABRICS** - the water is gradually cooled throughout the final two rinses with no spinning and then a delicate spin assures the maximum relaxation of the fabrics.

**DELICATE FABRICS** - final two rinses with no spinning and then the fabrics are left in water until it is time to unload. When you are ready to unload, press the "Crease Guard" button - this will drain.

**WOLLENS/HAND WASH** - after the final rinse the fabrics are left in water until it is time to unload **and the button indicator blinking.**

When you are ready to unload, press the "Crease Guard" button, this will drain and spin ready for emptying.

If you do not want to spin the clothes and activate drain only:

- Turn the programme selector to the "OFF" position;
- Select programme drain only 127 ;
- Switch on the appliance again by pressing the "Start/Pause" button.

G



### TIME COUNTDOWN SYSTEM INDICATOR LIGHTS

In order to better manage your time, this washing machine features an indicator light system that keeps you constantly informed on the remaining cycle time.

#### Indicator light START:

Remaining time above 60 minutes

#### Indicator light 60:

Remaining time less than 60 minutes

#### Indicator light 30:

Remaining time less than 30 minutes

#### Indicator light 15:

Remaining time less than 15 minutes

#### Indicator light Stop:

End of the programme.

L

### SPIN SPEED CONTROL

#### ROTATES IN BOTH DIRECTIONS

The spin cycle is very important to remove as much water as possible from the laundry without damaging the fabrics. You can adjust the spin speed of the machine to suit your needs. By adjusting the control, it is possible to reduce the maximum speed, and if you wish, the spin cycle can be cancelled altogether-position 0 .

**NOTE:**  
THE MACHINE IS FITTED WITH A SPECIAL ELECTRONIC DEVICE, WHICH PREVENTS THE SPIN CYCLE SHOULD THE LOAD BE UNBALANCED.  
THIS REDUCES THE NOISE AND VIBRATION IN THE MACHINE AND SO PROLONGS THE LIFE OF YOUR MACHINE.

H



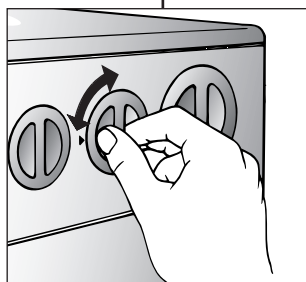
### WASH TEMPERATURE CONTROL KNOB

#### ROTATES IN BOTH DIRECTIONS

With this device it is possible to reduce, but not increase washing cycle temperature. The table of programmes indicate the maximum temperature advised for each type of wash.

**WARNING: THIS TEMPERATURE MUST NEVER BE EXCEEDED**

I



### BUTTONS INDICATOR LIGHT

The indicator light around the option buttons will light when specific options are selected. If you select an option button that is not compatible with the programme required the button light will not illuminate.

M

### PROGRAMME SELECTOR WITH OFF POSITION

**ROTATES IN BOTH DIRECTIONS.**  
**THE MACHINE IS TURNED ON BY SELECTING A PROGRAMME VIA THE PROGRAMME SELECTOR.**  
**THIS STATUS WILL BE INDICATED BY THE STOP INDICATOR LIGHT FLASHING, THIS LIGHT WILL CONTINUE TO FLASH UNTIL THE MACHINE HAS STARTED OR THE MACHINE IS RETURNED TO THE OFF POSITION.**

Press the "Start/Pause" button to start the selected cycle.

The programme carries out with the programme selector stationary on the selected programme till cycle ends. Switch off the washing machine by turning the selector to OFF.

**NOTE:**  
**THE PROGRAMME SELECTOR MUST BE RETURN TO THE OFF POSITION AT THE END OF EACH CYCLE OR WHEN STARTING A SUBSEQUENT WASH CYCLE PRIOR TO THE NEXT PROGRAMME BEING SELECTED AND STARTED.**

N

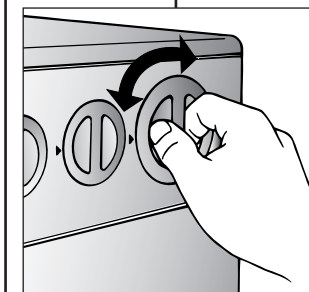
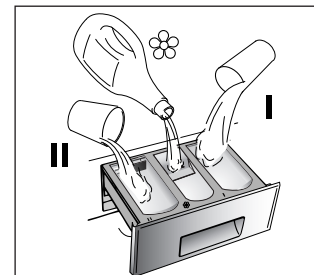


TABLE OF PROGRAMMES

PROGRAM FOR:	PROGRAMME SELECTOR ON:	WEIGHT MAX kg	TEMP. °C	CHARGE DETERGENT			
				II	☼	I	
<b>Resistant fabrics</b> Cotton, linen	Whites with prewash	90°C Pre	6	Up to 90°	●	●	●
Cotton, mixed	Fast coloureds	60°C **	6	Up to 60°	●	●	
	Fast coloureds	40°C	6	Up to 40°	●	●	
	Non fast coloureds	30°C	6	Up to 30°	●	●	
<b>Mixed fabrics and synthetics</b> Mixed, resistant	Fast coloureds with Prewash	60°C Pre	3	Up to 60°	●	●	●
Synthetics (nylon, perlon), mixed cotton	Fast coloureds	50°C **	3	Up to 50°	●	●	
	Non fast coloureds	40°C	3	Up to 40°	●	●	
<b>Very delicate fabrics</b>	Delicates	40°C **	1,5	Up to 40°	●	●	
	"MACHINE WASHABLE" woollens	☼ 40°C	1	Up to 40°	●	●	
	Hand wash	☞ 30°C	1	Up to 30°	●	●	
<b>Specials</b>	Rinse	☼	-	-	△	●	
	Fast spin	☼	-	-			
	Drain only	☼	-	-			
	"All 40°C" programme	ALL 40°C	6	Up to 40°	●	●	
	Rapid 30 minute	30' 40°C	2	Up to 40°	●	●	



**Please read these notes**

When washing heavily soiled laundry it is recommended the load is reduced to 3 kg maximum.

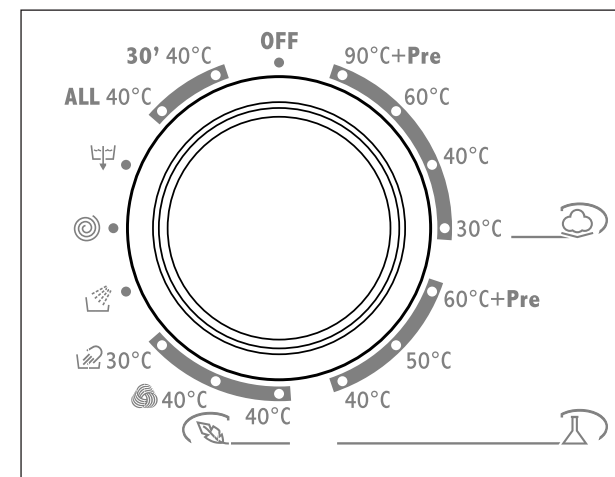
\*\* Programmes according to CENELEC EN 60456.

The spin speed may also be reduced, to match any guidelines suggested on the fabric label, or for very delicate fabrics cancel the spin completely this option is available with a spin speed control.

■ The variable temperature selector allows a reduction in the wash temperature. For example, an intense cottons cycle can be washed in cold water simply by moving the dial to the ☼ symbol.

△ When only a limited number of articles have stains which require treatment with liquid bleaching agents, preliminary removal of stain can be carried out in the washing machine.

Pour the bleach into the liquid bleach container, inserted into the compartment marked "II" in the detergent drawer, and set the special programme "RINSE". When this phase has terminated, turn the programme selector to the "OFF" position, add the rest of the fabrics and proceed with a normal wash on the most suitable programme.



## CHAPTER 8

### SELECTION

For the various types of fabrics and various degrees of dirt the washing machine has 4 different programme bands according to wash cycle, temperature and length of cycle (see table of washing cycle programmes).

#### 1 RESISTANTS FABRICS

The programmes have been designed for a maximum wash and the rinses, with spin intervals, ensure perfect rinsing. The final spin gives more efficient removal of water.

#### 2 MIXED AND SYNTHETIC FABRICS

The main wash and the rinse gives best results thanks to the rotation rhythms of the drum and to the water levels. A gentle spin will mean that the fabrics become less creased.

#### 3 SPECIAL DELICATE FIBRES

This is a new wash cycle which alternates washing and soaking and is particularly recommended for very delicate fabrics such as Pure Machine Washable Wool. The wash cycle and rinses are carried out with high water levels to ensure best results.

#### SPECIAL "HAND WASH"

This washing machine also has a gentle Hand Wash programme cycle. This programme allows a complete washing cycle for garments specified as "Hand Wash only" on the fabric care label. The programme has a temperature of 30°C and concludes with 3 rinses and a slow spin.

#### 4. SPECIALS

##### SPECIAL "RINSE" PROGRAMME

This programme carries out three rinses with a intermediate spin (which can be reduced or excluded by using the correct knob). It can be used for rinsing any type of fabric, eg. use after hand-washing.

##### SPECIAL "SPIN" PROGRAMME

Programme "SPIN" carries out a maximum spin (which can be reduced by using the correct knob).

##### DRAIN ONLY

This programme drains out the water.



#### "ALL 40°C" PROGRAMME

This is an exclusive system and involves 2 great advantages for the consumer:

- to be able to wash together different type of fabrics (e.g. cotton + synthetic etc...) **FAST COLOUREDS;**
- to wash with a considerable energy saving.

The "All 40°C" is an eco friendly programme that has low energy consumption (850W/h). The programme achieves this by using a low water temperature combined with periods of inactive soaking and short periods of drum cycling over a period of three hours.

#### Important:

- the first washing of new coloured fabrics must be done separately;
- in every case, **never mix NON-FAST COLOUREDS fabrics.**

#### 30 MINUTE RAPID PROGRAMME

The 30 minute rapid programme allows a complete washing cycle to be carried out in approximately 30 minutes, with up to a maximum load of 2 kg and a temperature of 40°C. When selecting the "30 minute rapid" programme, please note that we recommend you use only 20% of the recommended quantities shown on the detergent pack.

**ALL 40°C**

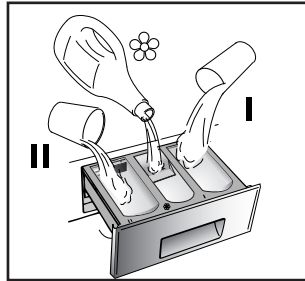
**30' 40°C**

## CHAPTER 9

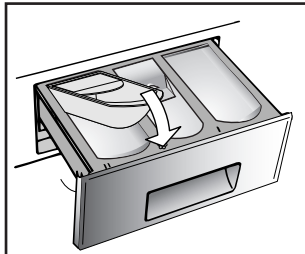
### DETERGENT DRAWER

The detergent draw is split into 3 compartments:

- the compartment labelled "I" is for prewash detergent;
- the compartment labelled "☼" is for special additives, fabric softeners, fragrances, starch, brighteners etc;
- the compartment labelled "II" is for main wash detergent.



If liquid detergents are used, please insert the special container supplied into the compartment marked "II" in the detergent drawer. This ensures that the liquid detergent enters the drum at the right stage of the wash cycle.

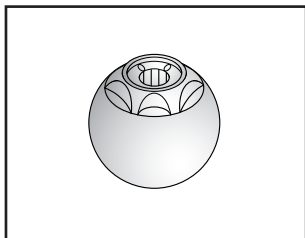


This special container must be inserted when using the "RINSE" program as a BLEACHING cycle.

**NOTE: SOME DETERGENTS ARE DIFFICULT TO REMOVE. FOR THESE, WE RECOMMEND YOU USE THE SPECIAL DISPENSER WHICH IS PLACED IN THE DRUM.**

**NOTE: ONLY PUT LIQUID PRODUCTS IN THE COMPARTMENT**

**LABELLED "☼". THE MACHINE IS PROGRAMMED TO AUTOMATICALLY TAKE UP ADDITIVES DURING THE FINAL RINSE STAGE FOR ALL WASH CYCLES.**



## CHAPTER 10

### THE PRODUCT

#### IMPORTANT:

When washing heavy rugs, bed spreads and other heavy articles, it is advisable not to spin.

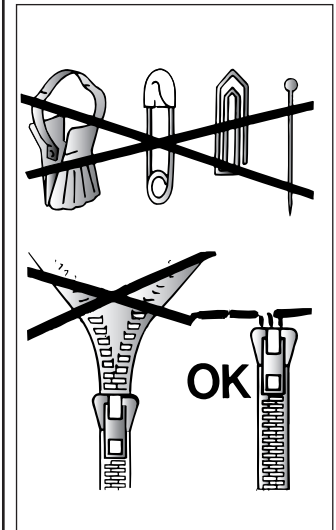
To be machine-washed, woollen garments and other articles in wool must bear the "Machine Washable Label".



#### IMPORTANT:

##### When sorting articles ensure that:

- there are no metal objects in the washing (e.g. brooches, safety pins, pins, coins etc.);
- cushion covers are buttoned, zips and hooks are closed, loose belts and long tapes on dressing gowns are knotted.
- runners from curtains are removed.
- attention is paid to garment labels.
- when sorting, any tough stains should be removed prior to washing using stain removers only recommended on label.



## CHAPTER 11

### CUSTOMER AWARENESS

A guide environmentally friendly and economic use of your appliance.

#### MAXIMISE THE LOAD SIZE

Achieve the best use of energy, water, detergent and time by using the recommended maximum load size. Save up to 50% energy by washing a full load instead of 2 half loads.

#### DO YOU NEED TO PRE-WASH?

For heavily soiled laundry only!  
SAVE detergent, time, water and between 5 to 15% energy consumption by NOT selecting Prewash for slight to normally soiled laundry.

#### IS A HOT WASH REQUIRED?

Pretreat stains with stain remover or soak dried in stains in water before washing to reduce the necessity of a hot wash programme.  
Save up to 50% energy by using a 60°C wash programme.

## WASHING

### VARIABLE CAPACITY


This washing machine automatically adapts the level of the water to the type and quantity of washing. In this way it is also possible to obtain a "personalized" wash from an energy saving point of view. This system gives a decrease in energy consumption and a sensible reduction in washing times.

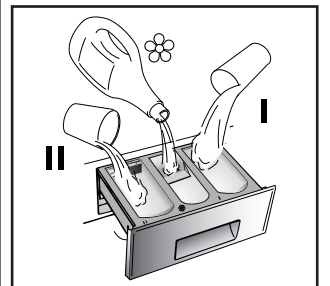
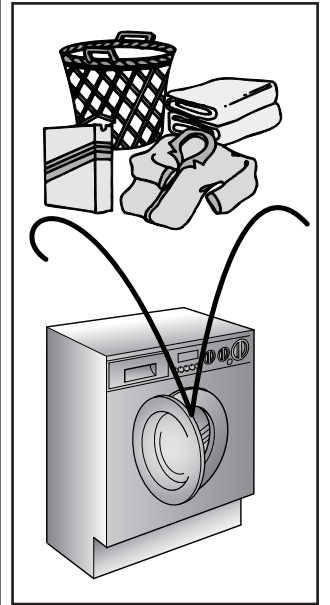
#### EXAMPLE:

A net bag should be used for particularly delicate fabrics.

Let us suppose that the washing consists of HEAVILY SOILED COTTON (tough stains should be removed with suitable stain removal).

It is advisable not to wash a load made up entirely of articles in towelling fabric which absorb a lot of water and become too heavy.

- Open the detergent drawer (P).
- Put 120 g in the main wash compartment marked II.
- Put 50 ml of the desired additive in the additives compartment .
- Close the detergent drawer (P).



● Ensure that the water inlet tap is turned on.

● And that the discharge tube is in place.

#### PROGRAMME SELECTION

Refer to the programme guide to select the most suitable programme.

Turning the selector knob required programme is activate. Wait for the "STOP" indicator light to flash.

Then press the START button.

When the START button is pressed the machine sets the working sequence in motion.

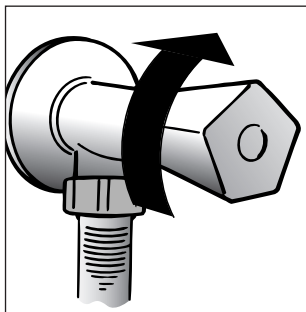
The programme carries out with the programme selector stationary on the selected programme till cycle ends.

**Warning:** If there is any break in the power supply while the machine is operating, a special memory stores the selected programme and, when the power is restored, it continues where it left off.

● At the end of the programme the indicator light "end cycle" will go on.

● When the programme has finished Wait for the door lock to be released (about 1 minute after the programme has finished). Switch off the machine by turning the programme selector to the "OFF" position. Open the door and remove the laundry. Turn OFF the water supply after every use.

**FOR ALL TYPES OF WASH CONSULT THE PROGRAMME TABLE AND FOLLOW THE OPERATIONS IN THE ORDER INDICATED.**



## CHAPTER 12

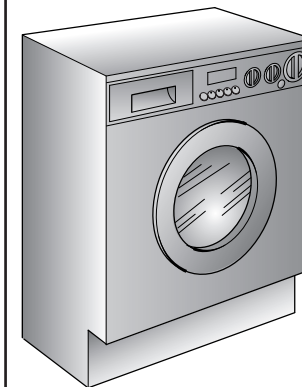
### CLEANING AND ROUTINE MAINTENANCE

Do not use abrasives, spirits and/or diluents on the exterior of the appliance. It is sufficient to use a damp cloth.

The washing machine requires very little maintenance:

● Cleaning of drawer compartments.

● Removals or long periods when the machine is left standing.



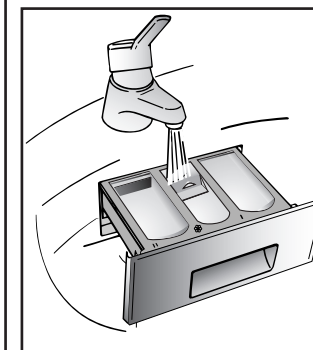
#### CLEANING OF DRAWER COMPARTMENTS

Although not strictly necessary, it is advisable to clean the detergent, bleach and additives compartments occasionally.

Remove the compartments by pulling gently.

Clean with water.

Put the compartments back into place



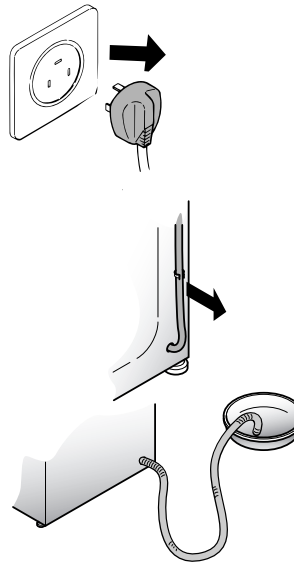
## REMOVALS OR LONG PERIODS WHEN THE MACHINE IS LEFT STANDING

When the machine is left standing for long periods in unheated rooms, the drain hose should be emptied of all remaining water.

This operation is recommended when moving the appliance from its installation.

The appliance must be switched off and unplugged. A bowl is needed. Detach the drainage hose from the clamp and lower it over the bowl until all the water is removed.

Repeat the same operation with the water inlet hose.



## CHAPTER 13

FAULT	CAUSE	REMEDY
1. Does not function on any programme	Mains plug not plugged in	Insert plug
	Mains switch not on	Turn on mains switch
	No power	Check
	Electric circuit fuses failure	Check
	Load door open	Close load door
2. Does not load water	See cause 1	Check
	Inlet tap turned off	Turn on water inlet tap
3. Does not discharge water	Discharge tube bent	Straighten discharge tube
4. Water on floor around washing machine	Leak from the washer between the tap and inlet tube	Replace washer and tighten the tube on the tap
5. Does not spin	The washing machine has not discharged water	Wait a few minutes until the machine discharges water
	"No spin" setting (some models only)	Turn the programme dial onto spin setting
6. Strong vibrations during spin	Washing machine not perfectly level	Adjust special feet
	Transport bracket not removed	Remove transport bracket
	Washing load not evenly distributed	Distribute the washing evenly

If the fault should persist, contact a Technical Assistance Centre. For prompt servicing, give the model of the washing machine, to be found on the label placed on the cabinet inside of the porthole.

### Important

#### 1 The use of environment friendly detergents without phosphates may produce the following effects:

- The discharge rinse water may result cloudier due to the presence of zeolites in suspension. This does not compromise the efficiency of the rinses.
- The presence of white powder (zeolites) on the washing at the end of the washing cycle. This does not remain incorporated in the fabric and does not alter the colour.
- The presence of foam in the last rinse water which is not necessarily a sign of inadequate rinsing.
- The non-ionic surface-active agents present in the composition of washing machine detergents are often difficult to remove from the washing itself and, even in small quantities, may produce visible signs of the formation of foam.
- Carrying out further rinses, in cases such as this, is not useful.

#### 2 If your washing machine fails to function, carry out the above-mentioned checks before calling the Technical Assistance Service.

Our Customer Care Centre can be called on:

**0871 22 22 503**

We aim to answer calls as quickly as possible, and in strict rotation as soon as one of our Customer Care team become free.

Our Customer Care Centre opening hours are:

Monday - Friday 8.00am - 8.00pm

Saturday 8.30am - 6.00pm

Sunday 10.00am - 4.00pm

Please ensure that you have available your appliances model number and serial number, there is a space at the back of this book for recording that information.

Alternatively visit the web site as detailed on the front cover of the handbook.

Outside the UK and Northern Ireland, please contact your local supplier.

### CONTACT US

In case of difficulty within the UK and Northern Ireland, please call Belling Customer Care Centre Helpline on

**0871 22 22 503**

Our Customer Care Centre is open during the hours below:

Monday to Friday 8am - 8pm

Saturday 8.30am - 6pm

Sunday 10am - 4pm

Please have to hand your appliances Model Number and Serial Number, which can be found on the databadge inside you cooker and recorded here for future reference.

Model Number									
Serial Number									



**GLEN DIMPLEX**  
HOME APPLIANCES

Glen Dimplex Home Appliances Limited is the owner of the Belling brand and is part of the Glen Dimplex group of companies.  
Stoney Lane, Prescot, Merseyside, L35 2XW  
08 26370 00 © 2006





This appliance is marked according to the European directive 2002/96/EC on Waste Electrical and Electronic Equipment (WEEE).

By ensuring this product is disposed of correctly, you will help prevent potential negative consequences for the environment and human health, which could otherwise be caused by inappropriate waste handling of this product.

The symbol on the product indicates that this product may not be treated as household waste. Instead it shall be handed over to the applicable collection point for the recycling of electrical and electronic equipment. Disposal must be carried out in accordance with local environmental regulations for waste disposal.

For more detailed information about treatment, recovery and recycling of this product, please contact your local city office, your household waste disposal service or the shop where you purchased the product.



09.11 - 41033024 - www.graficaestampa.it - Printed in Italy - Imprimé en Italie

The manufacturer declines all responsibility in the event of any printing mistakes in this booklet. The manufacturer also reserves the right to make appropriate modifications to its products without changing the essential characteristics.